



NAPFSC



February 2001

R E P O R T

A report to the members of the National Association of Professional Forestry Schools and Colleges

What's Inside

President's Message	1
President-Elect's Message	2
Feature Article	
Spotlight on Sustainable Forestry	3
Committee Reports	4
People Profiles	6
Washington, DC, Update	7
Regional Reports	8
NAPFSC News Briefs	13
Financial Summary	18

President's Message

Perry J. Brown

The political scene has been unfolding since our General Assembly in November, and we have tried to keep abreast of events. Since the secretaries of the federal departments were confirmed, we are beginning to see what emerges, and thus we are positioning NAPFSC to interact with those coming on the scene.

The Executive Committee will meet in Washington, DC, March 6-8, and we have outlined an aggressive schedule to discuss important issues and to move our agenda before Congress. Of priority is our continuing work with the National Coalition on Sustaining America's Nonfederal Forests, since the agenda for the coalition matches our needs for increases in RREA and McIntire-Stennis funds, plus our enhanced involvement across an array of research, education, and outreach issues. We will focus on workforce and accreditation issues, and make several visits to the Hill to meet with key staffers and members of Congress. The folks from Texas, as one might guess, have become a new focus for NAPFSC.

Approximately two weeks before the Executive Committee meeting, Al Ek, Research Chair; Arnett Mace, Legislation and Policy Chair, and I will meet with the AF&PA Science and Technology Committee and other potential partners. We will discuss new partnerships for research, the upcoming drafting of the Farm Bill and other issues. As we noted in November, there is currently a spirit of cooperation to move programs forward, and we are working to capitalize on it.

I hope that all of our members have a great spring semester/quarter. Let us know of opportunities of importance to NAPFSC.



NAPFSC

REPORT

Bi-Annual Newsletter of the
National Association of Professional
Forestry Schools and Colleges

Executive Committee:

Perry J. Brown. . . .President
C. P. Patrick Reid. . . .President-Elect
Albert R. Vogt. . . .Past President
G. H. Weaver. . . .Secretary-Treasurer
Terri Bates. . . .Executive Liaison
George Hopper. . . .Chair, Extension
Donald H. DeHayes. . . .Chair, Education
Daniel E. Keathley. . . .Chair, International
Arnett C. Mace, Jr.. . . .Chair, Policy/Legislative
Alan Ek. . . .Chair, Research
J. Michael Kelly. . . .Chair, North Central Region
William C. McComb. . . .Chair, Northeast Region
B. Allen Dunn. . . .Chair, Southern Region
Terry L. Sharik. . . .Chair, Western Region
Susan G. Stafford. . . .Diversity

Staff:

Arlice K. Banks. . . .NAPFSC Report
Designer and Editor

Letters, news items, stories,
and photographs
for the
NAPFSC REPORT
may be sent to:

Terri Bates
NAPFSC Executive Liaison
3325 Rose Lane
Falls Church, VA 22042
Telephone: (703) 538-1134
E-mail: mtbates@erols.com

President-Elect's Message

C. P. Patrick Reid, Coalition Chair

The National Coalition on Sustaining America's Nonfederal Forests is alive and well, although we have been somewhat lurking in the shadows the last couple of months until changes brought about by the November 2000 election and the new Administration are sorted out.

I am pleased to report that we have received grants from CSREES, USDA FS, and AF&PA that will allow the coalition to continue its activities over the next 18 months. Plans are underway for the Steering Committee (expanded) to meet this March, as well as to assemble the entire coalition this spring or early summer. The Steering Committee has continued to communicate by teleconferencing.

Our additional funding will allow us to utilize more of Terri Bates' time and reprint the coalition report for even broader distribution. The report is widely quoted and used as a basis for several discussions concerning the 2002 Farm Bill and FY2002 budget planning. NAPFSC's Executive Committee has agreed to use the report as the basis for its position on McIntire-Stennis, RREA, and NRI for FY2002.

The coalition is coordinating efforts on the 2002 Farm Bill with NAPFSC and other organizations and agencies. This spring, our efforts will focus on strategic planning for implementation of the recommendations, offering testimony to Congress, and building vital grassroots support in each state.

Thanks to all who provided contact names in your states. If you have not yet done so, I strongly encourage you to forward those names to Terri Bates. We welcome your support.

Resolutions Passed

At the NAPFSC 2000 Annual Meeting in Washington, DC, November 15-16, resolutions were passed in honor of the work and dedication of George Brown, David Thorud, Al Vogt, Pat Reid, and the late Larry Jahn.



Feature Article - Spotlight on Sustainable Forestry

SFP and Yale University Join the Pinchot Institute to Explore New Graduate Curriculum in Sustainable Forest Management

*Michael Washburn, Director, Program on Forest Certification,
Yale School of Forestry and Environmental Studies*

As part of its ongoing efforts to evaluate sustainable forestry efforts among forestry organizations in the United States, the Pinchot Institute conducted a study from 1998 to 1999 on professional forestry education. The culmination of the study was the completion of the report, *The Evolution of Forestry Education in the United States: Adapting to the Changing Demands of Professional Forestry*, published in January 2000.

As a follow-up to that project, the Sustainable Forestry Partnership (SFP) has launched a collaborative project to develop a model curriculum as a reference for universities interested in developing a graduate major in sustainable forest management. SFP is a consortium of universities and other institutions working to document innovation in sustainable forestry and to integrate this innovation broadly in both policy and practice. SFP has partnered with Yale University's School of Forestry and Environmental Studies, and the Pinchot Institute, to conduct the two-year project. Thirty-two forestry schools have agreed to participate in focus groups and a national conference to stimulate innovation and document options for academic program development.

An advisory committee, representing public and private forest management organizations, conservation groups, universities, and professional associations, will offer information and insight into the development of a model curriculum. With guidance from the advisory committee, a series of focus groups will be held at schools around the United States. These focus groups, scheduled for late winter and spring 2001, will explore issues related to the content of the curriculum model, the feasibility of its adoption, and steps to be taken towards implementation. A national conference, consisting of participants of these focus groups as well as forestry employers, will convene to assimilate these various ideas

into a comprehensive model for consideration around the country. The overall project goal is to promote the advancement of forestry education in the United States to reflect the evolution of science and social values pertaining to forests and forestry.

For more information, contact Laurie Schoonhoven, SFP information specialist, The Pennsylvania State University, at sfpinfo@psu.edu or (814) 863-0401.

Sustainable Forestry Initiative Program Participation

Jay Farrell, AF&PA

The nations' forestry schools and colleges provide both the scientific foundation and trained graduates for the forestry profession. AF&PA has long relied on the academic community to help continually improve the Sustainable Forestry Initiative (SFI)sm program. The Expert Review Panel, SFI State Implementation Committees, the Deans' Tour, and SFI licensing provide important opportunities for feedback and critical review from the academic community. AF&PA is proud to have enrolled five university forests totaling 55,744 acres as SFI licensees: Paul Smith's College, Clemson University, Duke University, North Carolina State University, and the University of Minnesota – Cloquet Forestry Center; several others have expressed interest. This offers enormous opportunities for students and faculty to study the application of standards and certification criteria to manage their own university forests. AF&PA hopes this will generate industry/university partnership opportunities and recommendations for further program improvement.

For information on academic involvement in the SFI program, please contact Jay Farrell at (202) 463-2775. Contact Suzanne Mangino at (202) 463-2746 for SFI licensing information.



Committee Reports



Education Committee

Donald H. DeHayes, Chair

The year 2000 was filled with interesting and, at times, controversial initiatives related to educational activities within NAFSC. We had an opportunity to work closely with the US Forest Service as they engaged in workforce planning. We also teamed with them on the Workforce Planning workshop, held at the NAFSC General Assembly meeting in November. According to Gloria Manning, Deputy Chief of Business Operations, about 42 percent of the Forest Service's professional workforce is eligible to retire within five years. This anticipated substantial turnover has prompted the agency to consider the development of its future workforce, and to be proactive in developing recruitment strategies to attract a diverse and engaged workforce for the future.

There are good indications that the Forest Service may be once again hiring our graduates over the next several years. As part of its workforce planning efforts, the agency has identified qualities it seeks in its future employees. Because many future Forest Service employees will come from our academic programs, I have extracted, from various reports, those qualities that were identified.

- ability to integrate biological, physical, and social sciences into an ecologically-based, multi-resource program
- strategic thinking and working in teams
- mediation and conflict resolution skills
- ability to communicate orally and

in writing

- possessing decision-making and analytical skills
- data gathering and applications of high tech systems (e.g., GIS) in problem solving
- working in urban and rural settings

Interestingly, the Environmental Protection Agency (EPA) is also undergoing a substantial transition in its workforce. Over the next five years, it is anticipated that about 47 percent of its workforce will be eligible to retire. The EPA has been engaged in workforce planning for several years and recently published a report, *EPA Workforce Assessment Project* (May 1999, 28 pages), that describes their future workforce needs. Listed below are some of the qualities they desire, which seem to parallel those described by the USFS.

- broad-based (multi- and interdisciplinary) understanding of environmental issues
- analysis, critical thinking, problem solving, reasoning
- collaboration, team orientation
- application of information technology
- creative, innovative thinking, leadership
- communication skills
- occupation-specific skills

These agencies are also aware of the desire and need to diversify their workforce and to be proactive about

recruitment to attract the "best and brightest" into their organizations. Diversity goals include increasing ethnic diversity in the workforce and promoting a greater understanding and appreciation of the connections between ethnicity, culture, and resource management in a multicultural society. The latter is relevant to all USFS employees and, therefore, to all the students that we educate. NAFSC has been active in promoting a diversity agenda, but we recognize that we have a long way to go.

In an effort to enhance visibility and recruitment, the USFS is also planning a "campus relations" program. The expected expansion in USFS employment and recruitment may provide opportunities for the agency and universities to partner in recruitment activities aimed at students at all levels (elementary to graduate school) and from all sectors of society (urban to rural communities).

NAFSC is also playing an important role in the reconsideration of the Society of American Forester's (SAF) accreditation program. An SAF-appointed Task Force on Accreditation produced a report outlining changes in its accreditation standards and procedures. Working with Michelle Harvey, SAF Director of Science and Education, NAFSC agreed to review the task force's report and recommendations and to organize that review by region. That is, the educational chairs of the Northeast (Dave Field, Maine), North Central (Dan Keathley, MSU), West



Committee Reports

EDUCATION COMMITTEE REPORT CONTINUED FROM PAGE 4

(Don Arganbright, NAU), and South (Wayne Smith, Florida) regions of NAPFSC each are attempting to compile input from schools throughout their region. The plan is to incorporate that input in the development and implementation of a revised set of accreditation standards and procedures. If you have not already done so, please provide your comments on the task force report to the educational chair from your region.

As many of you know, SAF's decision to abruptly and dramatically increase the annual fee to schools to support the accreditation program stimulated considerable discussion about the value of accreditation, who benefits from it, and who should pay for the program. Many NAPFSC members called for a dramatic scaling back, or even discontinuation, of the accreditation process, while others felt that accreditation was important to define forestry as a profession. There was consensus, however, that a full cost/value accounting of the accreditation process was necessary, and the NAPFSC membership unanimously passed a resolution for a moratorium on SAF accreditation reviews until such a cost accounting was completed.

Following the fall NAPFSC meeting, Michelle Harvey and I formed a committee to conduct this cost/value assessment and, if still deemed appropriate following the review, to make recommendations about the implementation of the task force report on accreditation. The plan is to involve each of the NAPFSC regional educational chairs in this review. Please be assured that we will report the results of the cost/value assessment to the entire NAPFSC membership before proceeding with additional work on consideration of modified standards or procedures.

Extension Committee

George Hopper, Chair

(The following forestry report was presented to the ECOP Forestry Liaison Team on February 14-15, 2001, in Baltimore, MD.)

The goal of the ECOP Forestry Liaison Team is to garner additional resources for forestry and renewable resources programs through the implementation of the National Coalition for Sustaining America's Nonfederal Forests report, *A National Investment in Sustainable Forestry*. Members of the liaison team include: N. Bull (Northeast, chair), L. Biles (CSREES), S. Jones (Southern), T. Nakazawa (Western), J. Bagent (ECOP Budget Committee), C. O'Conner (North Central), P. Walsh (North Central), S. Reed (Extension Forester, Western), G. Hopper (NAPFSC representative and ECOP Forestry Liaison), S. Broderick, Extension Forester, (Northeast), M. Heard (1890s), W. Archey (State Foresters Association), and M. Parson (US Forest Service).

Since the August meeting in Denver, where ECOP endorsed the coalition's report referenced above, the Forestry Liaison Team has met twice in Washington, DC, and several times by conference call. In September, the team met with US Forest Service representatives to discuss common program areas and the potential for joint work on the 2002 Farm Bill language. A representative from the USFS has joined our team. This effort focuses on permissive language to be added to the forestry section of the Farm Bill so that Extension and the land-grant system would be authorized to receive funds, particularly in new program initiatives.

ECOP has been invited to be a member of the national coalition. Nancy Bull, Director, Connecticut Extension Service, was appointed as the ECOP representative to the coalition.

Our second meeting was held in December with representatives of NRCS. Again, mutual interests and work on the conservation section of the 2002 Farm Bill were discussed. An offer was extended to NRCS to join our liaison team. In addition, the team met with both administrators at CSREES and NASULGC, as well as the executive committee of the National Association of State Foresters (NASF). NASF has been strong advocates for Extension for many years, and expressed a commitment to work with Extension on the Farm Bill and other related opportunities.

Remember . . .

The NAPFSC REPORT is on line!

Visit the web site at

www.napfsc.org



CONTINUED ON PAGE 16



People Profiles

Kluender Named Forest Resources Director, Dean

Richard A. Kluender was appointed Director of the Arkansas Forest Resources Center and Dean of the School of Forest Resources at the University of Arkansas, Monticello (UA-M), effective September 1, 2000. Dr. Kluender was Associate Dean and Director since July 1999 and Interim Dean and Director since January 2000. He joined the UA-M forestry faculty in 1984.



Richard Kluender

Dr. Kluender's specialty is forest economics and operations. He received the Team Leadership Award for USDA Forest Service research in 1993 and the Chancellor's Faculty Excellence Award for teaching and research in 1999. He was President of the Arkansas Academy of Sciences and a member of several forestry professional societies. He has authored more than 200 monographs and articles on natural resources, economics, and policy issues.

After earning a BS from Virginia Polytechnic Institute and State University (Virginia Tech), Dr. Kluender served in the US Army before returning to Virginia Tech for his MS degree. He then worked as a forester with a major integrated forest products company and as a trade association executive. He returned to Virginia Tech in 1980 to work on his Ph.D.

Hashimoto Appointed Dean at University of Hawaii at Manoa

Dr. Andrew G. Hashimoto became Dean of the College of Tropical Agriculture and Human Resources, University of Hawaii at Manoa, in October 2000. Before coming to Hawaii, Dr. Hashimoto was Vice Provost for Academic Affairs at Oregon State University (OSU), Corvallis, a position he held since 1995.

Hashimoto was born and raised in Hawaii. However, he left the state in 1962 to enroll as an undergraduate at Purdue University where he earned a BS in Civil Engineering and an MS in Environmental Engineering. He earned his Ph.D. in Agricultural Engineering at Cornell University.

While at Cornell, Hashimoto was hired by the USDA's Agricultural Research Service (ARS) to run its agricultural waste management program. In 1976, ARS moved Hashimoto to Hastings, NE, to work at the US Meat Animal Research Center. While there, he specialized in the bioconversion of animal waste into natural gas.



Andrew Hashimoto

Foster Becomes Dean at MSU



Sam Foster

Sam Foster was named Dean of the College of Forest Resources and Director of the Forest and Wildlife Research Center at Mississippi State University (MSU) on February 1. He succeeds Interim Dean Bob L. Karr, who has resumed his duties as Associate Dean.

For eight years, Foster served as Assistant Director of the USDA Forest Service Southern Research Station, which includes 11 research units at locations throughout the South. Prior to his appointment as Assistant Director, he was a Forest Service program manager and supervisory research geneticist, as well as an adjunct professor of plant and soil science at Alabama A&M University.

An internationally known forest geneticist, Foster held positions in industry, including Vice President of the International Forest Seed Company and Manager of Forest Research at Crown Zellerbach Corp.

He completed a BS and MS at the University of Tennessee and a Ph.D. at Oregon State University.



Washington, DC, Update

C. Randall Nuckolls and Patrick Turner

New President, New Congress, New Dynamics

November's elections brought about major changes to Washington, DC. Along with the change in the White House, Congress, while marginally controlled by the Republicans, will have to find a new sense of bipartisanship for much to occur.

White House

Much has been written about last year's election, and there is no need to rehash those discussions. In his first few weeks in office, President Bush met with dozens of members from both parties in an effort to develop strong relationships. It will be interesting to see how this method of governing affects the legislative proposals that work their way through Congress.

Senate

Due to the defeat of several incumbent GOP Senators, the Senate will have a 50-50 tie for the first time in history. While the GOP will still maintain control of the upper chamber due to the vote of Vice-President Cheney, Democrats were able to forge a major power-sharing agreement with the Republicans. This agreement calls for an equal number of Republicans and Democrats on all committees, although the top GOP Senator will retain the chair. It also provides that in case of a tie vote in committee, legislation will be sent directly to the Senate floor, rather than being stalled in committee. This unprecedented agreement will take a lot of work by both parties to prevent the Senate from grinding to a standstill. While some GOP Chairs were opposed to the agreement, most members of the Senate have pledged to make this process work. This agreement will be in place for as long as the Senate retains its current make-up.

House

Again, it was very difficult to defeat a sitting member of Congress. Only six House members were defeated for reelection. Although they had been hoping to take over the House, Democrats gained only two seats, short of the seven seats needed to retake the House.

With such a narrow margin of control in the House, GOP and Democratic leaders have pledged to work together to advance a positive agenda for America. The reality, however, is that for major new proposals to have a chance at passage, both sides will have to bury the partisanship and work together. In both bodies, the moderates will have enhanced clout as key swing votes.

FY2002 Budget Process Delayed

Due to the inauguration of the new Administration, the federal budget process has been delayed for several months. The usual budget process calls for the release of the new fiscal year budget document on the first Monday in February. The delay gives the new Executive Branch officials an opportunity to put their imprint on the coming year's budget, rather than operating with a prior Administration's budget.

In early February, agencies received information from the Office of Management and Budget regarding their FY2002 budget levels and targets. According to the current plan, departments and independent agencies were advised that the President will make a budget speech on Tuesday, February 27, and then release an initial budget blueprint the next day. The target date for the release of the President's full budget proposal is mid-April.

President Bush Announces Delay in Ban on Road-Building and Logging

A ban on road-building and most logging in a third of the country's national forests was delayed until May 12 by the Bush administration. The forest plan, which President Clinton announced January 4, has been attacked by Western Republican lawmakers, and by energy, timber, and mining industries. The delay is in line with an executive order President Bush issued to counter the series of regulations and rules that the Clinton administration released in its final days.

Because the forest restrictions were published in the *Federal Register* before Bush took office, Bush cannot permanently alter or block the forest plan without going



Regional Reports

Southern Region

William G. Hubbard, Southern Regional Extension Forester

Southern States Participate in Video-Conference Program

Fourteen southern states, ranging from Maryland to Missouri, are currently participating in a 7-week shortcourse entitled Master Tree Farmer 2001. The course covers basic forest and wildlife management for the private forest landowner and includes over 20 regionally renowned speakers. A similar course, Master Tree Farmer 2000, was conducted last year at 67 sites in 10 states. It attracted 1,275 forest landowners and 200 natural resource professionals. This year's course has over 2,000 landowners registered at 140 sites in 14 states. Extension forestry specialists in all 14 states provided the lead-coordinating role. Additional information about the shortcourse is available at www.mtf2000.net or www.mtf2001.net.

University of Florida to Host Conference

The Association of Natural Resource Extension Professionals (ANREP) recently announced that the University of Florida, University of Virgin Islands, and Auburn University will collaborate on the next National Extension Natural Resources Conference. Although the final location and dates are not set, the planning committee has a contract with a hotel in Naples, FL, for June 2-5, 2002. The conference follows a successful conference in Minnesota (1998) and California/Nevada (2000). Visit www.anrep.org for information on this event or the association.

Wildland-Urban Interface

Conference and Book Planned

The University of Florida will host a national conference on the wildland-urban interface, November 5-8, 2001. The purpose of the conference is to provide current information and tools to enhance natural resource management, planning, and policy-making at the wildland-urban interface. Results of an ongoing USDA Forest Service assessment (www.interfacesouth.org) will be presented. Invited speakers will deliver overviews of major issues in four main areas related to the wildland-urban interface. Contributed oral and poster presentations will present new research results and illustrate examples of successful programs, approaches, and case studies. An edited book will be published based on the presented materials. Check the web site for more information: (www.ifas.ufl.edu/~CONFERWEB/urban/index.html).

On-Line Digital Reference Guide Available

Landowners and natural resource professionals looking on-line for forestry and natural resource information will find that www.forestryindex.net is a great place to start. This web site, complete with an internal and external search engine, is a compilation of web sites, pdfs, and other on-line links arranged by major and minor topic area. The developers used the *SAF Forestry Handbook* and *The Dictionary of Forestry* to group topics under major categories. Therefore, extension, popular, and

Western Region

Terry L. Sharik, Chair

Western NAPFSC met on November 16, 2000, in Washington, DC, immediately following the meetings of the NAPFSC Executive Committee and General Assembly. We identified nearly two dozen topics for consideration, and settled on the following six to discuss at our summer 2001 meeting in Oregon:

- (1) our relationship with state and private forestry (USFS);
- (2) regional coordination of research;
- (3) learning outcomes assessment;
- (4) diversity issues;
- (5) implications of a changing political environment, and
- (6) institutional profiles and trends.

Regarding profiles and trends, we have developed an annual survey that provides information on student enrollments, gender-race-ethnicity, graduation numbers, employment, and credit-hours generated; faculty numbers, composition (professorial rank, gender/minority), and salaries; graduate-student funding (stipends, waivers, and other benefits); and budgets for teaching, research, and extension. Western NAPFSC administrators have found this information useful in internal discussions at their institutions.



Regional Reports

Northeast Region

William C. McComb, Chair

The Northeast Section of NAPFSC met in Washington, DC, on January 11-12. Topics discussed included SAF accreditation guidelines; distance education offerings; activities and projections in Washington, DC for the next four years; a visit from Dr. Stan Ponce, USGS, and updates from agency cooperators. Dr. Bov Eav, USFS Northeast Station Director, joined us for the entire meeting.

Don DeHayes, UVM, discussed the recently proposed SAF accreditation guidelines. It is apparent that whatever guidelines are adopted by SAF, there is a diversity of strengths and goals represented among the Northeastern programs and that the guidelines should allow that diversity to be expressed. Also discussed were the value of accreditation of programs and certification of individuals. Clearly, some Northeastern programs place a high value on accreditation, while others value more the certification of individuals.

The group agreed to develop a proposal for the USDA Challenge Grants program to facilitate efforts on coordinated offerings of materials using distance education. The proposal will be designed to provide offerings to on- and off-campus students and resources professionals.

Patrick Turner provided an excellent overview of the current events in Washington, DC, and an assessment of where we might stand given recent Cabinet appointments and Committee leadership on the Hill. Clearly the split Congress will have a significant influence on any proposed changes to budgets and initiatives over the next four years. Stan Ponce gave an overview of USGS' recent initiatives to work closer with universities. Since Chip Groat is remaining with USGS in the next administration, we could see increased opportunities in working with USGS. One outcome of the discussion with Stan, Bov Eav, and John Dennis, National Park Service, was the proposal to develop a jointly supported Workshop on Invasive Species. The proposal would involve a regional meeting highlighting current work, customer needs, and future directions.

Bov Eav and John Dennis spoke of efforts within their agencies to develop current and future directions. "Developing Partnerships" was a clear theme expressed by all agency cooperators.

The meeting concluded with a visit to NSF to meet with

the director of the Biocomplexity Program. It was clear that this program could and should be one that our natural resources programs can benefit from. Future discussions within the region should include how we might work more closely with NSF on this and other initiatives to allow our faculty to compete successfully for these funds.

SOUTHERN REGION CONTINUED FROM PAGE 8

research publications can be categorized for easy location. The site was produced and is managed by the Southern Regional Extension Forester's office and can be updated remotely. As new information becomes available on the Internet, the author or webmaster can add it from their site. To ensure publications are scientifically sound and informationally correct, all submissions are subject to review before placement on-line.

Arkansas Forestry Community Assists with Ice Storm Catastrophe

With conservative estimates at over \$30 million in damage, the Arkansas forestry community has mobilized their forces to assist landowners and homeowners in dealing with their losses associated with the ice storm. In particular, the University of Arkansas CES, Arkansas Forestry Commission, Arkansas Forestry Association, and other University of Arkansas faculty are assisting landowners with damage assessment, evaluating residual stands, erosion control, homeowner requests, and other related assistance.

Personnel News

Dr. Kathryn Flynn, Extension Forester with Auburn (ACES), has accepted a position with the Alabama Nature Conservancy. Dr. Ken McNabb will assume the coordinator role with the Alabama Cooperative Extension System.

Dr. Mary Duryea will assume an 8-12 month position as Assistant Dean for Research within the Institute of Food and Agriculture (IFAS) at the University of Florida.

Dr. Hallie Dozier will begin an assignment as an Extension Forester with the Louisiana State University Cooperative Extension Service in Baton Rouge.



Meeting Dates

NAPFSC Executive Committee

March 6-8, 2001
Washington, DC

September 11-12, 2001
Denver, CO



NAPFSC Annual Meeting

September 12-13, 2001
Denver, CO



Regional NAPFSC

Northeast

January 11-12, 2001
Washington, DC

North Central

February 26-27, 2001
Kansas City, MO

Southern

April 18-20, 2001
Alexandria, VA

Western

July or August (TBA)
Corvallis, OR



Society of American Foresters Annual Convention

September 13-17, 2001
Denver, CO

October 4-8, 2002
Winston-Salem, NC

People Profiles

CONTINUED FROM PAGE 6

Chan-Halbrendt Selected Associate Dean, Director

In October 2000, Dr. Catherine Chan-Halbrendt assumed her new position as Associate Dean and Director of Research at the College of Tropical Agriculture and Human Resources, University of Hawaii at Manoa.

Chan-Halbrendt, a native of Hong Kong, arrived in the United States in the late 60s to attend Southern Illinois University, where she earned a BS in Microbiology and a MS in Plant and Soil Sciences. She received her Ph.D. in Agricultural Economics from the University of Missouri, with a concentration in international development.

After obtaining her doctorate, Chan-Halbrendt went to the University of Delaware and then to the University of Vermont, where she served as Professor and chair of the Department of Community Development and Applied Economics until she moved to Hawaii.

Blatner Named Professor and Chair at WSU

January 2001, Dr. Keith Blatner was named Professor and Chair, Department of Natural Resource Sciences, Washington State University. Dr. Blatner joined the faculty in 1983, bringing with him previous professional experience in the midwest and southern United States. During his tenure at Washington State University, he worked on a variety of research and consulting projects in the Pacific Northwest, as well as in Russia, Southeast Asia, and Latin America.



Keith Blatner

Blatner's current research interests are focused in two areas: 1) production and marketing of timber and non-timber products, and 2) the changing role of NIPF owners in the forest products sector of the Pacific Northwest.

Blatner has authored over 100 publications, including 33 refereed journal articles. He served as Associate Editor for Management and Economics for the *Western Journal of Applied Forestry* from 1993 through 1998, and as Associate Editor for Economics and Policy for the *Canadian Journal of Forest Research* from 1991 to 1994. He also has a long history of professional involvement in the Society of American Forester. Since becoming a member in 1977, he has served the society in a variety of capacities.

Dr. Blatner holds a Ph.D. in Forestry from Virginia Polytechnic Institute and State University, an MS in Forestry from Mississippi State, and a BS in Natural Resources from Ohio State.

PEOPLE PROFILES CONTINUED ON PAGE 12



Washington, DC, Update

CONTINUED FROM PAGE 7

through a new rulemaking process. Under the restrictions, the Forest Service will ban road-building in 58.5 million acres of federal forests where no roads currently exist, including 9.3 million acres in the Tongass National Forest in Alaska. Western Republican legislators—along with energy, timber, and mining industries—oppose the ban. The Clinton administration claimed the timber industry would feel little impact because there is currently little logging in the proposed roadless areas.

New Committee Assignments

To date, the Senate Appropriations Committee has organized for the 107th Congress, but the House Appropriations Committee has been delayed in naming its subcommittee assignments. Listed below are the members of the Agriculture and Interior appropriations subcommittees that deal with most of the federal forestry

HOUSE AGRICULTURE APPROPRIATIONS	
REPUBLICANS	DEMOCRATS
Henry Bonilla (TX), Chairman	Marcy Kaptur (OH), Ranking Member
HOUSE INTERIOR APPROPRIATIONS SUBCOMMITTEE	
REPUBLICANS	DEMOCRATS
Joe Skeen (NM), Chairman	Norm Dicks (OR), Ranking Member
SENATE AGRICULTURE APPROPRIATIONS	
REPUBLICANS	DEMOCRATS
Thad Cochran (MS), Chairman	Herb Kohl (WI), Ranking Member
Arlen Specter (PA)	Tom Harkin (IA)
Christopher Bond (MO)	Byron Dorgan (ND)
Mitch McConnell (KY)	Dianne Feinstein (CA)
Conrad Burns (MT)	Richard Durbin (IL)
Larry Craig (ID)	Tim Johnson (SD)
SENATE INTERIOR APPROPRIATIONS SUBCOMMITTEE	
REPUBLICANS	DEMOCRATS
Conrad Burns (MT), Chairman	Robert C. Byrd (WV), Ranking Member
Ted Stevens (AK)	Patrick Leahy (VT)
Thad Cochran (MS)	Fritz Hollings (SC)
Pete Domenici (NM)	Harry Reid (NV)
Robert Bennett (UT)	Byron Dorgan (ND)
Judd Gregg (NH)	Dianne Feinstein (CA)
Ben Nighthorse Campbell (CO)	Patty Murray (WA)

funding. Because of the 50-50 split in the Senate, there will be an equal number of Republicans and Democrats on all subcommittees.

On the House side, because of GOP term limit rules, there are a number of new Appropriations Subcommittee chairs. Both the Agriculture and Interior Subcommittees will have new leadership. Former Agriculture Subcommittee Chair Joe Skeen will move to the Interior Subcommittee, while Texas Republican Henry Bonilla will oversee the Agriculture Appropriations Subcommittee.

Reauthorization of Farm Bill

The House and Senate Agriculture committees will consider the reauthorization of the Farm Bill either later this year or early in 2002. In late January, both agriculture committees held their first hearings to begin writing the 2002 Farm Bill. The committees received the final report of the Commission on 21st Century Production Agriculture. The commission was created by the Federal Agriculture Improvement and Reform (FAIR) Act of 1996 to identify the appropriate role of the federal government in production agriculture following expiration of the FAIR Act in 2002.

The Senate Agriculture Committee has seven new members. Richard Lugar (R-IN) will remain Chair, and Tom Harkin (D-IA) will remain as Ranking Member. To date, subcommittee chairs and membership have not been named. The full committee membership is as follows:

Republicans

Richard Lugar (IN),
Chairman
Jesse Helms (NC)
Thad Cochran (MS)
Mitch McConnell (KY)
Pat Roberts (KS)
Peter Fitzgerald (IL)
Craig Thomas (WY)*
Wayne Allard (CO)*
Tim Hutchinson (AR)*
Michael Crapo (ID)*

Democrats

Tim Harkin (IA),
Ranking Member
Patrick Leahy (VT)
Kent Conrad (ND)
Tom Daschle (SD)
Max Baucus (MT)
Blanche Lincoln (AR)
Zell Miller (GA)
Debbie Stabenow (MI)*
Ben Nelson (NE)*
Mark Dayton (MN)*

*New Member in 107th Congress

CONTINUED ON PAGE 12



WASHINGTON, DC, UPDATE
CONTINUED FROM PAGE 11

The House Agriculture Committee membership is still undecided. To date, the Republicans have placed seven freshmen on the committee. Democrats have been delayed in making their assignments.

HOUSE AGRICULTURE COMMITTEE	
REPUBLICANS	DEMOCRATS
Larry Combest, TX, Chair	Charles Stenholm, TX, Ranking Member
John A. Boehner, OH	Gary A. Condit, CA
Bob Goodlatte, VA	Collin C. Peterson, MN
Richard W. Pombo, CA	Calvin M. Dooley, CA
Nick Smith, MI	Eva M. Clayton, NC
Terry Everett, AL	Earl F. Hilliard, AL
Frank D. Lucas, OK	Tim Holden, PA
Saxby Chambliss, GA	Sanford D. Bishop, Jr., GA
Jerry Moran, KS	Bennie G. Thompson, MS
Bob Schaffer, CO	John Elias Baldacci, ME
John R. Thune, SD	Marion Berry, AR
William L. Jenkins, TN	Mike McIntyre, NC
John Cooksey, LA	Bob Etheridge, NC
Gil Gulknecht, MN	Christopher John, LA
Bob Riley, AL	Leonard L. Boswell, IA
Michael Simpson, ID	David D. Phelps, IL
Doug Ose, CA	Mike Thompson, CA
Robin Hayes, NC	Baron P. Hill, IN
Ernie Fletcher, KY	Joe Baca, CA
Charles Pickering, MS	Rick Larsen, WA
Tim Johnson, IL	Mike Ross, AR
Tom Osborne, NE	Anibal Acevedo-Vila, PR
Mike Pence, IN	Vacant
Dennis Rehberg, MT	Vacant
Sam Graves, MO	
Adam Putnam, FL	
Mark Kennedy, MN	

Congressman Bob Goodlatte, (R-VA), will remain as Chair of the Department Operations, Oversight, Nutrition and Forestry Subcommittee.



People Profiles

Rains to Head State and Private Forestry



Michael Rains was named Head of the USDA Forest Service's State and Private Forestry (S&PF) Deputy Area, effective mid-December 2000. He replaces Janice McDougle, who now reports to Phil Janik, Chief Operating Officer.

Rains began his Forest Service career 32 years ago as a wildland firefighter in California. He served in various agency positions across the country, including timber management, watershed restoration, budget planning and development, information systems, and administration. In addition, he held leadership positions in S&PF for the last 12 years as Director of the Northeastern Area and as Associate Deputy Chief.

Last year, Rains led a team to examine the cost of catastrophic wildfire. Recently, he directed the team that produced the National Fire Plan in response to President Clinton's request in August.

Rains has a BS and MS in Forestry and a MS in Watershed Management from Humboldt State University. He obtained his MBS from Georgia State University.

Risbrudt Becomes Strategic Planning and Resource Assessment Director

Chris Risbrudt was named Director of Strategic Planning and Resource Assessment, USDA Forest Service, in early 2001. He served as the agency's Director of Ecosystem Management. Risbrudt replaces Kathryn P. Maloney, who was named Director of the Northeastern Area, State and Private Forestry.

Risbrudt will manage the Forest Service's long-term planning and policy formulation. His responsibilities will include preparing the Forest Service's national strategic plan, assisting in the preparation of the agency's annual performance plan, coordinating program evaluation, and managing Forest Service resource assessment.

Risbrudt has been with the Forest Service since 1978. Prior to his assignment as Director of Ecosystem Management in April 1995, he was Deputy Regional Forester, Northern Region, headquartered in Missoula, MT. Two of his previous assignments were also in Washington, DC—as Director of Policy Analysis from 1985 to 1988, and as an economist with the State and Private Forestry staff from 1980 to 1983. Between these assignments, he served as a research project leader, North Central Forest Experiment Station, in St. Paul, MN. He joined the Forest Service in 1978 as a research forester at the Forest Products Laboratory, Madison, WI.

Risbrudt holds a Ph.D. in Forest Economics and a MS in Forest Administration, both from Michigan State University.



NAPFSC News Briefs



News from the Executive Liaison

Terri Bates

National Woodland Owners Survey

The Forest Service has convened a Steering Committee to advise the agency on the development of the next National Woodland Owners Survey. NAPFSC is represented on the committee, as is the National Association of State Foresters, NRCS, and CSREES. The last survey was completed and released in 1997. A tentative timeline was established with completion set for early 2003. The funding and survey structure will be developed over the coming months and the questionnaire will be mailed to respondents this fall.

Farm Bill Hearings

On January 30-31, The Senate and House initiated the first of many anticipated hearings on Farm Bill reauthorization when they reviewed the final report of the Commission on 21st Century Production Agriculture. Overall, the members' focused on commodity production issues that will be the driving force for the timing of the next Farm Bill. Conservation programs were mentioned only briefly, but forestry and conservation titles are expected to be topics of considerable discussion in future hearings.

Publications and Websites of Interest

A report by the Fish and Wildlife Service, *Status and Trends of Wetlands in the Conterminous United States 1986 to 1997*, is available on the web at <http://wetlands.fws.gov/bha/SandT/SandTReport.html>. According to the report, the rate of wetlands loss dropped 80 percent, down to 58,500 acres lost annually.

The USDA National Resource Inventory (NRI) was updated and re-released in January. Among its findings: a total of 10,052,200 acres of forestland were developed between 1982 to 1997, yet there was an overall increase in forestland of 2,617,000 acres. The NRI is available at <http://www.nhq.nrcs.usda.gov/NRI>.

The proceedings of more than 50 papers presented at Fragmentation 2000 - A Conference on Sustaining Private Forests in the 21 Century, held September 17-20, 2000, in Annapolis, MD, are now available. Contact The Sampson Group, 5209 York Road, Alexandria, VA 22310, e-mail rneilsampson@cs.com, for additional information. Price: \$50 to conference attendees, \$75 to others.

The RPA 2000 Timber Assessment Draft Review, as well as other Forest Service timber assessment documents, can be reviewed at <http://www.fs.fed.us/pnw/sev/rpa>.

The Chief's Old Growth Speech

Forest Service Chief Michael Dombeck's January speech at the Landscape Legacies Conference at Duke University is available at <http://www.fs.fed.us>. This speech stirred the pot for many when Dombeck announced that a goal of the National Forest System in the coming year would be "to update and strengthen our existing old growth policy statement." The announcement of the Forest Service's new policy for roads is also available at this web site.

Penn State Wins NIPF Award

The Pennsylvania State University's School of Forest Resources was presented the Nonindustrial Private Forest Education Award for their Extension Education Program, which is based on improving the management and sustainability of independently owned private woodlands. Dr. Kim Steiner accepted the annual award, on behalf of the school, during the General Assembly of NAPFSC's Annual Meeting in Washington, DC, last November. The award is conferred jointly by the National Woodland Owners Association (NWOA) and NAPFSC.

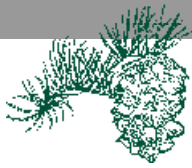
The NIPF award is based on an institution's all-around teaching, research, and extension program, directed toward improving the management and sustainability of independently owned private woodlands. The award is conferred jointly by the National Woodland Owners Association (NWOA) and NAPFSC.

Pennsylvania is nearly 60 percent forested (12.5 million acres), with more than half a million private forest landowners. The School of Forest Resource's Extension Education Program for private forestland is diverse, drawing heavily upon partnerships, cooperation, and research. Special recognition went to extension foresters Jim Finley and Mike Jacobson for their work in Pennsylvania with forest landowners.

Penn State competed with five other university nominations. Previous recipients of the award include forestry programs at Washington State University, University of Georgia, and Mississippi State University.



Committee Reports



Research Committee

Alan Ek, Chair

In the newsletter last fall, I indicated we would have a new administration. Little did we know just how “new” that administration would be. Given delays in the election process, the Bush Administration will not have much time to reshape the Clinton budget. This means we need to use all of our capability early to impact the planning by the new administration. At the same time, we need to bring research priorities and their funding to the attention of Congress for their eventual deliberation. Fortunately, the basis for our strategy is clear: the report of the National Coalition for Sustaining America’s Nonfederal Forests brings together much of the situation and need. We clearly owe the coalition leaders a debt of gratitude. NAPFSC is already moving to inform and interest our partners in a strategy for research and extension. We will be working closely with NASULGC, the National Association of State Foresters, the American Forest and Paper Association, and others to build support for our request. Key elements of the request are outlined below. I present it here in some detail to aid your early efforts to build the case through your own contacts.

The Cooperative Forestry Research Program (McIntire-Stennis Act), is the lead forestry research effort administered by the USDA Cooperative State Research, Education, Extension Service (CSREES). This program is the foundation of forestry research and scientist training efforts at universities. Funding through this program provides for innovative research on productivity, technologies for monitoring and extending the resource base, and environmental quality. This program is critically important today since universities provide much of the nation’s research, and we train virtually all of the nation’s scientists in forestry. The main categories of research needs are to:

- significantly enhance sustainability and productivity of nonfederal forests;
- increase the financial contributions of nonfederal forests to benefit landowners, the rural community, state and national economies, and environmental values, and
- conserve and sustain the nonfederal forests and other natural resources for future generations.

Building toward this accomplishment will take several years and steps as described in the coalition’s planning document. However, we urge a significant step in the first part of this new century for FY 2002. Importantly, with forests, opportunities foregone today can highly constrain options for the future. Thus, we focus below on targeting research on the most compelling needs. Associated with this program are critically important extension and basic research funding programs. Together these priorities are described below.

The Cooperative Forestry Research Program is currently funded at \$21.932 million and matched more than three times by universities with state and nonfederal funds. NAPFSC’s funding request for FY 2002 is \$30 million, tentatively targeted at:

- sustainable and productive forest management on private lands to address issues of competitiveness and economic growth;
- forest inventory, monitoring, and assessment with emphasis on new technologies;
- new products and processing technologies and utilization of small trees to extend the forest resource and improve environmental quality, and
- assessing social values and tradeoffs so as to facilitate the understanding of policy options and informed decisions at all levels of government.

We will further ask CSREES to provide this support to universities to focus on new or existing approved projects. The purpose would be for near-term progress in addressing one or more of these research targets in each school’s state, region, or nationally. It is recognized that progress will be dependent on a critical mass of scientist effort, and collaboration among schools is encouraged. Additionally, stakeholder advisory mechanisms should be a part of the funding allocation process. In the process of funding these projects, CSREES should also ask that portions of this funding build research capacity, including the provision for training much needed new forestry scientists.

CONTINUED ON PAGE 16



NAPFSC News Briefs

National Awards Program: Teaching in the Food and Agricultural Sciences

Gregory Smith

Higher Education Programs Staff, CSREES

This national awards program honors a select group of college and university teachers who excel at teaching. It is designed to focus national attention on the teaching role—one that is fundamental to the development of the scientific and professional expertise essential to the future growth and progress of our nation's food and agricultural system. Awards are presented to two national (\$5,000) and eight regional (\$2,000) recipients. Funds are disbursed to the recipient's institution for the purpose of strengthening instructional programs in the food and agricultural sciences.

Teacher nominees must be employed by a college or university that (1) confers a baccalaureate or higher degree in at least one area of the food and agricultural sciences; (2) has demonstrated a commitment to the food and agricultural sciences, and (3) attributes a high priority to its education mission.

The complete award guidelines and nomination form are available at <http://www.reeusda.gov/serd/hep/hep.htm>. Make sure you select the link labeled "National Awards Program for Excellence in College and University Teaching in the Food and Agricultural Sciences."

Southern Forest Science Conference

A three-day comprehensive Southern Forest Science Conference will be held November 26-28, 2001, at the Renaissance Waverly Hotel, Atlanta, GA. The purpose of the conference is to celebrate the historical contributions of forest science to the sustainability and productivity of southern forests, and share information about the current state of knowledge of forested ecosystems: soil, water, wildlife, vegetation, socio-economic benefits, biological diversity, and global change. NAPFSC is a co-sponsor of the conference. For registration information, contact:

USDA Forest Service, Southern Research Station
Telephone: (828) 257-4302
Web site: <http://www.southernforestsience.net>

Initiative For Future Agriculture and Food Systems (IFAFS II)

Larry Biles, CSREES

A Request for Proposals (RFP) for The Initiative for Future Agriculture and Food Systems (IFAFS II) should be released to the *Federal Register* soon. When released, this proposal is expected to resemble the IFAFS I call for proposals, especially in regards to the multifunctional, multidisciplinary, multistate, and multi-institutional criteria. If the February target date is met for the proposal's release to the *Federal Register*, CSREES anticipates the following general timeline:

- RFP closing date: late March-early April
- Proposals mailed to panelists: late April
- Panel hearings: June or early July
- Grant awards to successful applicants: August

All dates are dependent upon a timely release of the RFP, and, therefore, are subject to change.

While waiting for the RFP, please be cognizant of CSREES' needs for panelists. The target disciplines for the Alternative Natural Resource Management Practices for Private Lands section are forestry, range management, and wildlife and fisheries. Send nominations to Larry Biles, USDA-CSREES, 1400 Independence Avenue, SW, Mailstop 2210, Washington, DC 20250-2210, or lbiles@reeusda.gov. Please include a two-page curriculum vitae with your nomination.

Dr. Dan Keathley, Chair, Department of Forestry, Michigan State University, will serve as panel manager for the Alternative Natural Resource Management Practices for Private Lands section again this year. NAPFSC was relatively successful under IFAFS I and we anticipate similar success for IFAFS II. In addition to IFAFS' Natural Resources category, NAPFSC members are encouraged to explore opportunities in the Plant Genomics, New Uses for Agricultural Products, Precision Technologies, and Farm Efficiency and Profitability sections.



Committee Reports

EXTENSION COMMITTEE REPORT CONTINUED FROM PAGE 5

On February 8-9, a subcommittee of the Liaison Team met again in Washington, DC, to hammer out language for the Forestry section of the Farm Bill. This will be a first effort for us to be at the table with the US Forest Service.

In meeting with the CSREES Administrators and with Jack Bagent (chair of ECOP Budget Committee), the Board of Agriculture Budget Committee, we have recommended that RREA must be funded for the full authorization of \$15 million. The current and historic funding has been for approximately \$3 million. We discussed how new funds might be distributed. Our proposal is that the allocations remain the same. Of the new funds current, approximately \$6 million be used to “recover” from the lack of formula increases the last 20 years. The balance would then be available through a competitive grant process.

Our next steps include a meeting in April with leadership at the Office of Budget and Management to discuss their perspective on competitive dollars. We will then draft a potential RFP process that is acceptable to us and to the CSREES Administration. We will also meet with Forest Landowners Association during their national convention in Washington, DC.

Jack Bagent, Director of Louisiana Extension Service, has also met with Henson Moore, American Forest and Paper Association, and solicited his support for our legislative efforts. AFPA is a very active and committed team focused on improving the resource base for our forestry and renewable resources programs, and a supporter of Extension programs.

No action is requested of ECOP at this time.

RESEARCH COMMITTEE REPORT CONTINUED FROM PAGE 14

The Renewable Resources Extension Act (RREA) is currently funded at \$3.192 million. NAPFSC’s funding request for FY 2002 is \$15 million. This funding is critical to forestry and related natural resources extension and stewardship needs in states. It is a major vehicle for implementation of the findings from research. Again we would ask CSREES to provide direction to focus this funding on key areas, e.g.,

- enhancing productivity and stewardship, notably the implementation of new forest practices guidelines and BMPs for water quality;
- improving forest products processing to effectively extend the resource base, and

CONTINUED IN NEXT COLUMN ON THIS PAGE

RESEARCH COMMITTEE REPORT CONTINUED FROM PREVIOUS COLUMN

- understanding the tradeoffs and policy options with respect to conflicting forest uses.

This funding would be targeted to address the crucial issues of forest management for productivity and environmental quality on nonfederal lands brought about by diminished harvest levels on federal lands.

NAPFSC will also express strong support for the National Research Initiative Competitive Grants Program (NRI), in particular increased funding to address basic research needs relative to forest productivity and environmental quality.

Finally, NAPFSC will urge support for the Initiative for the Future Agriculture and Food Systems (IFAFS) as defined in the Agricultural Research, Education, and Reform Act of 1998. This new program for competitive research and extension offers great potential for developing new uses for forest products and for improving natural resource management.

Note that some of this is tentative and to be developed further with our partners, so suggestions are welcome. More strategy and action plans will follow.



People Profiles

Dean Brown Appointed to Research Council

*Lynn Davis, Public Affairs Director
College of Natural Resources, Virginia Tech*

Greg Brown, Dean of the College of Natural Resources, has been appointed by the US Secretary of Agriculture to an 18-member Forestry Research Advisory Council for a three-year term. The council represents federal and state agencies, forest industries, forestry colleges and other institutions, and volunteer public groups interested in forests and related natural resources.

The council is required by the Agriculture and Food Act of 1981 to provide advice to the Secretary of Agriculture on efficiently accomplishing the purposes of the McIntire-Stennis Act of 1962. The council also provides advice related to the Forest Service research program and reports on regional and national planning and coordination of forestry research within the federal and state agencies concerned with developing and utilizing the nation's forest resources.

Brown is a past chair of the Board on Natural Resources of the National Association of State Universities and Land-Grant Colleges (NASULGC), which last year honored him with an award in appreciation of his many years of service to that organization. He currently serves on NASULGC's Board on Agriculture Budget Committee, and on the Partnership Task Forces with the US Geological Survey and the EPA.

Greg Brown is a past president of the National Association of Professional Forestry Schools and Colleges. Among the other boards on which he serves are the Virginia Urban Forest Council Board of Directors, and the Virginia Forestry Association Board of Directors. Dean Brown chairs the Powell River Project Board of Directors, where Virginia Tech is successfully applying new technologies to reclaim surface-mined coalfields.

He has had many years of teaching, research, and outreach experience in forest biology at several universities, as well as administrative experience at various levels of university administration.

Radtke Joins Forestry Faculty at Virginia Tech

Phil Radtke joined Virginia Tech's College of Natural Resources' forest biometrics faculty last year. He received his BS at the University of Minnesota in 1994, his M.S. at Virginia Tech in 1996, and an M.S. and Ph.D. at the University of Minnesota in 1999.

Radtke's areas of interest are: assessment and modeling of forest resources; evaluating models used in forestry and ecology; acquisition, management and analysis of data, and improving access to growth and yield models. He has taught courses in forest and land measurements, forest measurements and a graduate course on advanced forest modeling.

NAPFSC News Briefs

Georgia-Pacific Endows Dean's Graduate Fellowship Fund

*Lynn Davis, Public Affairs Director
College of Natural Resources, Virginia Tech*

Georgia-Pacific has given Virginia Tech's College of Natural Resources \$150,000 to endow a Dean's Graduate Fellowship to recruit and retain the highest quality of graduate students.

College dean Greg Brown said, "Income from the fund will be used to award whole or partial fellowships to graduate students, who will be known as Georgia-Pacific Fellows. Each year the award will be rotated among the college's Departments of Forestry, Fisheries and Wildlife Sciences, and Wood Science and Forest Products."

Recipients will be chosen by the University Scholarship and Financial Aid Committee with recommendations by the dean. The fellows will be chosen on the basis of potential and interest in contributing to the field of natural resources, with consideration given to financial need, academic achievement, extracurricular leadership, and community service.

The endowed fund will be maintained and managed by the Virginia Tech Foundation in such a manner that the donor, Georgia-Pacific Foundation, and others may make additional contributions to the endowed scholarship fund over the years.



**NAPFSC
2000 Financial Summary
(December 31, 2000)**



INCOME

Dues Paid	\$	87,077.00
Other Deposits	\$	11,569.60
Dues Outstanding		(13,064.00)
USFS Application complete and approved		<u>(15,000.00)*</u>
		(28,064.00)

TOTAL INCOME **\$ 98,646.60**

EXPENSES

Operating Expenses.....	\$92,272.25
Coalition Expenses.....	\$10,924.33

TOTAL EXPENSES **\$103,196.58**

Submitted by G. H. Weaver, Secretary/Treasurer

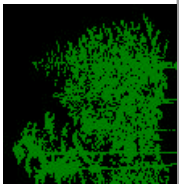
*Outstanding Income
USFS payment \$15,000 received 1/17/01

Outstanding Expense
\$5,000 paid 1/17/01



Your NAPFSC Notes





NAPFSC

R E P O R T

A report to the members of the National Association of Professional Forestry Schools and Colleges



National Association of Professional
Forestry Schools and Colleges
Alice K. Banks, NAPFSC Report Designer and Editor
College of Natural Resources
Virginia Polytechnic Institute and State University
324 Cheatham Hall, Mail Code 0324
Blacksburg, VA 24061